



Promoting Active Learning for Japanese Pronunciation through Flipped Learning

Misuzu Kazama

Lecturer, Japanese Language
Dept. of Asian Studies

Bosung Kim

Instructional Designer
Centre for Teaching, Learning and Technology

CTLT Summer Institute | August 22-25, 2016

BACKGROUND

Nowadays, the importance of teaching pronunciation (sound and intonation) has been recognized in the field of language teaching.



But...

- 1) Limited class time
- 2) Lack of supporting materials
- 3) Lack of effective teaching methods

However, pronunciation is an integral part of communication.



ISSUES AND OUR NEW APPROACH

For issues

- Students are not sure how to make proper pronunciation.
- Students don't know where some of their weakness lie in their pronunciation.



Traditionally,

Students repeat after instructor or just listen to the CD came with textbook.

Problems

- Interference of student's mother tongue
- Focalization of wrong pronunciation and intonation
- Lack of feedback

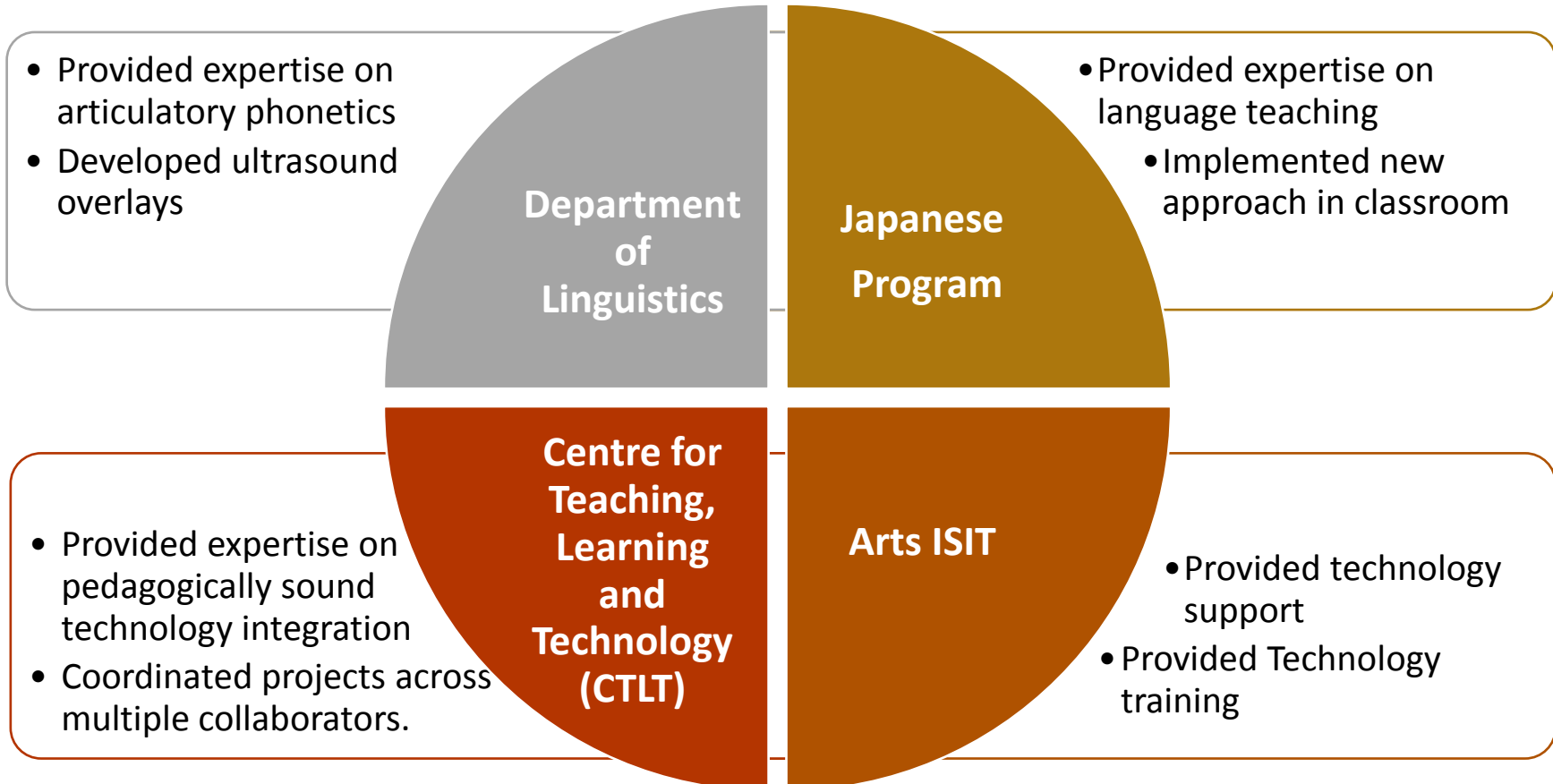


Our New Method

Visualize

- Tongue movement for pronunciation using ultrasound
- Pitch lines of Intonation using Praat (pitch visualizer)

COLLABORATIVE WORK THROUGH TLEF IN 2014-2016

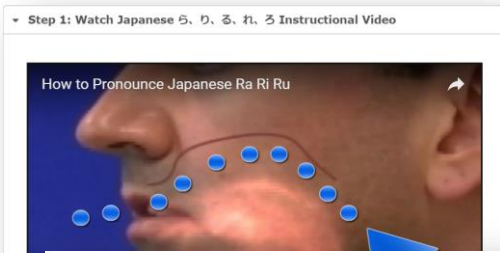


PRE-CLASS ACTIVITY FOR PRONUNCIATION EDUCATION IN FLIPPED-LEARNING



Pre-class activity through Japanese Pronunciation Online Tutorial

- Learn how to produce proper sounds and intonation through video tutorials
- Check their understanding through quizzes
- Collect badges for achievement



Which one is the correct pronunciation of the Japanese word for "rain"?

0:00 / 0:01

0:00 / 0:01

This block contains a quiz question and two audio options. Each option includes a play button, a progress indicator (0:00 / 0:01), a volume control slider, and a speaker icon. The first option has a blue dot on the progress bar, indicating it is selected.

My Earned Badges

Note. When you earn a badge, it will change from a faded to a brightly coloured image. You can also check the details of the badge by clicking on the badge image.

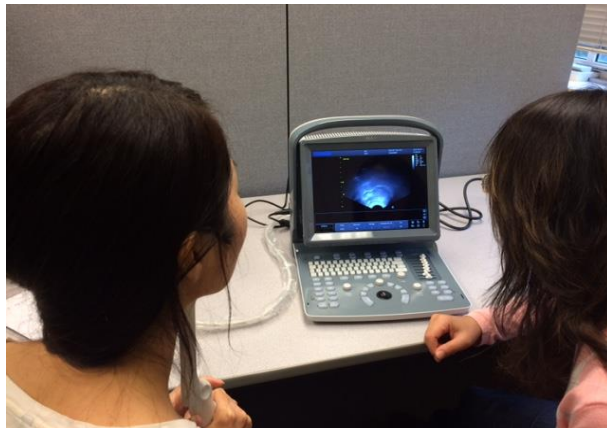
Three small badge icons are shown at the bottom: 'BASICS' (faded), 'SOUNDS' (brightly colored), and 'INTONATION' (faded).

IN-CLASS ACTIVITY FOR PRONUNCIATION EDUCATION IN FLIPPED-LEARNING

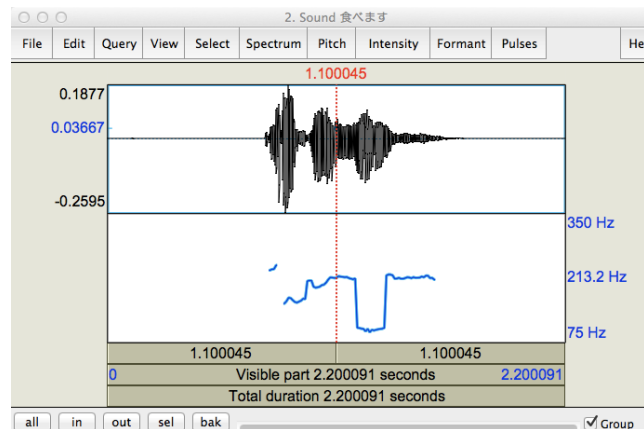


In-class or Hybrid-space Activity with Ultrasound and Pitch Visualizer

- Compare visual representation of model speech with that of own speech
- Practice correct intonation through evaluating own mistakes.

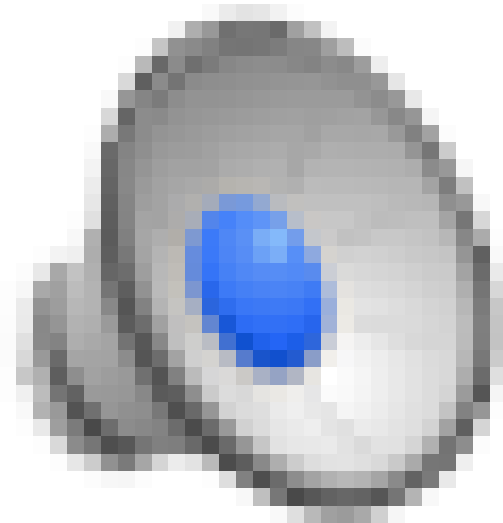


Ultrasound Station



Pitch Visualizer (Praat)

In-Class or Hybrid Space Activity using Pitch Visualizer (Praat)



RESULT

Intonation Test (whether they can determine correct sounds or not) before and after the implementation:

➤ **Experimental Group (used Tutorial video and Pitch visualizer)**

12% improved

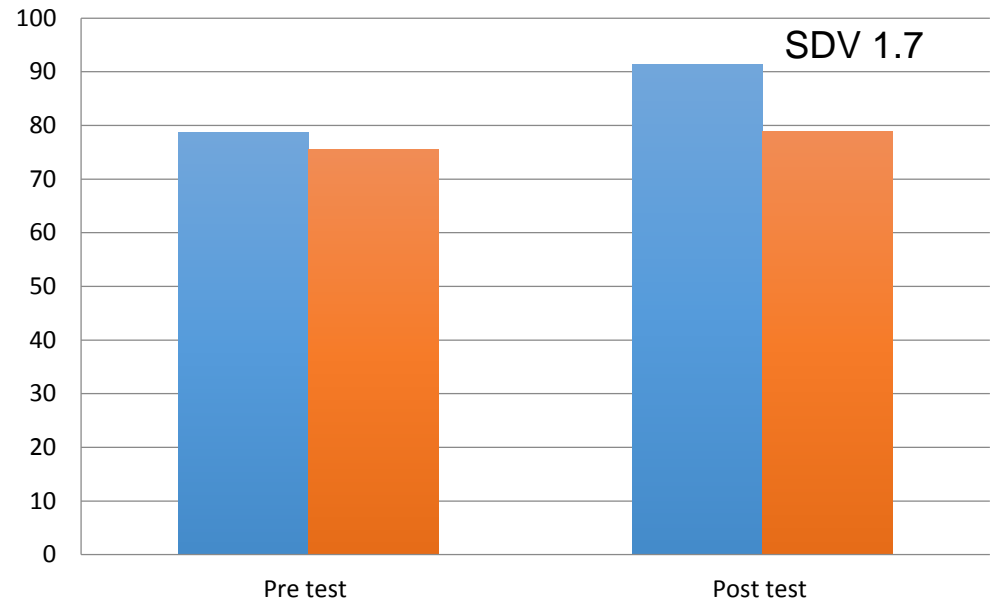
➤ **Control Group (Tutorial Video only)**

10% improved

A little difference was observed



Intonation Pre & Post Test Results



RESULT OF SURVEY

About Pre-Class Activity

Was eNunciate video resource helpful?

Yes 11

No 0

Has your awareness of your Japanese intonation changed as a result of taking JAPN 323?

Yes 11

No 0

☺ I thought just being able to speak Japanese is good enough, but now I think being able to speak Japanese with the correct intonation is important.

☺ Now I start to think at which point I have to emphasize my intonation.

☺ The videos point out specific details which I hadn't learned about yet.

☹ **The workload is a bit high.**

About In-Class Activity using Pitch Visualizer

😊 I really enjoyed it and found it very useful.
this is really helpful for me to understand the pitch flow
and the high/low pitch.

😊 It was fun and help me to understand why my
Japanese sound like "foreigner" compared to local
Japanese speakers when I listened to my own voice
using pitch

😞 I think it's pretty fun **but too much time was spent
on intonation part.**

😞 It was a useful tool to see what my intonation was
like, **however it was a little hard to read and use
considering how specific the graph of the intonation is.**

CHALLENGES & SUGGESTIONS

☹️ “The workload is a bit high.”

→ 😊 Students and Instructor have to know the clear purposes of the assignments.

☹️ “Too much time was spent on intonation part.”

→ 😊 Make a Hybrid space (Ultrasounds/Pitch visualizer at lab) for the future use. (But who manage it...?)

Instructor has to find the teaching moments while observing and facilitating student learning in class.





THE UNIVERSITY OF BRITISH COLUMBIA

Please check our website:

<http://enunciate.arts.ubc.ca/>

<http://blogs.ubc.ca/enunciatejapanese>

Thank you 😊